

37.68

37.94

37.29

37.87



LEADERS IN TECHNOLOGY

**FEVER
SCREENING
SOLUTIONS**



BN
BARNEL
DESIGN & MANUFACTURING

PROUD SYSTEMS INTEGRATOR FOR:

HIKVISION

BASELINE HANDHELD THERMOGRAPHY CAMERA



FEATURES & TECHNICAL SPECS

- > High sensitivity thermal module with 384 x 288 resolution
- > Leading thermal image processing technology: Adaptive AGC, DDE, 3D DNR
- > Supports multiple palettes
- > High quality optical module with 2 MP resolution
- > Bi-spectrum image fusion, picture-in-picture preview
- > Wide temperature measurement range: -20 - 550° C
- > High temperature measurement accuracy: Up to 32° C, 32%
- > High-caliber 640 x 480 resolution 3.5" LCD touch display
- > Long-distance laser light supplement for thermography targets
- > LED light supplement makes the device a torch in required scenarios
- > Supports 1x, 2x and 4x digital zoom
- > Live viewing, photo capture, and video recording are supported through Wi-Fi. Built-in rechargeable Li-ion battery
- > Up to 4 hours continuous operation



SPECIFICATIONS:

- > Field Of View: 37.5° x 28.5°
- > Max. Resolution: 25Hz: 384 288
- > Digital Zoom: Thermal: 1x, 2x, 4x
- > Monitor: 63.5' LCD touch display
- > Max. Resolution: 1920x1080
- > Accuracy: +/- 0.5°C
- > Storage: Built-in memory module (64G)
- > Photo & Video: Thermal/Optical/
Fusion image
- > Wi-Fi: Supported

- > Weight: Approx. 660 g (1.46 lb)
- > Alarm: Supports real time audio alarm
- > Operation Time: 4-5 Hours
- > Hardware Interface: micro USB
- > Protection Level: IP54
- > Dimension: 244 mm x 100 mm x 104 mm (9.6" x 3.9" x 4.1")
- > Measurement Range: 30-40°C

THERMOGRAPHIC TEMPERATURE SCREENING ECONOMIC HANDHELD CAMERA

The handheld thermal camera, specially designed for body temperature measurement. It's equipped with a 160 X 120 resolution thermal detector. It helps to quickly detect fever

KEY FEATURES

- > 160 X 120 resolution
- > Thermographic accuracy up to ± 0.5 °C
- > 320 X 240 resolution 2.4" LCD display
- > Built-in rechargeable Li-ion battery
- > Up to 8 hours continuous running

FUNCTIONS

Thermography

Device detects the real-time temperature, and display it on the screen.

Storage

Device is equipped with replaceable memory card to store recorded captured snapshots, and important data.

Palette

Device supports 4 palettes.



FEATURES & TECHNICAL SPECS

Thermal Module

- > Image sensor - Uncooled Focal Plane Arrays
- > Max. Resolution - 160 x 120
- > Pixel Pitch - 17Qm
- > Response waveband - 8Qm to 14Qm
- > NETD - < 40 mK (@ 25 °C, F#=1.0)
- > Field of View - 37.2° x 50 °
- > Focal length - 3.1 mm
- > IFOV (mrad) - 5.48 mrad
- > Min. Focus Length - ≥ 150 mm
- > Aperture - F 1.1

Image Display

- > Monitor - 320 x 240 resolution 2.4" LCD display
- > Palettes - Black hot, White hot, Rainbow, Ironbow

Thermography

- > Rules - 3 thermometry points: Max. Temperature; Min. Temperature; Center Temperature
- > Thermographic Range - 30°C to 45 °C
- > Thermographic Accuracy - 30.5 °C

Battery

- > Battery Type - Rechargeable Lithium Battery
- > Battery Operating Time - 8 hours continuous running
- > Storage - Replaceable memory card (default 8G, support up to 128G storage)
- > Photo - Thermal image
- > Video - N.A.
- > Language - English



FACE RECOGNITION TERMINAL

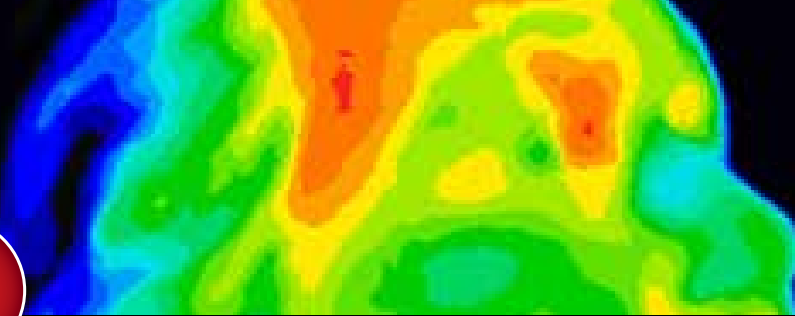
SPECIFICATIONS:

- > Sensor: Vanadium Oxide uncooled sensor
- > Resolution: 120x160
- > Frame rate: 25fps
- > Temperature range: 30 °C to 45 °C (86 °F to 113 °F)
- > Temperature accuracy: 0.5 °C, without black body calibration
- > Measuring distance: 0.3 to 2 m
- > Screen: 7 inch touch screen 1024x600
- > Recognition mode: Face: 1:1 and 1:N
- > Face capacity: 50 000
- > Face recognition duration: < 0.2 s per person
- > Face recognition distance: 0.3 to 2 m
- > Working temperature: 0 °C to 50 °C (32 °F to 122 °F)
- > Working humidity: 10 to 90% (No condensing)
- > Application: Indoor
- > Application environment: Indoor and windless environment use only



FEATURES & TECHNICAL SPECS

- > Supports Vanadium Oxide uncooled sensor to measure target's temperature.
- > Temperature measuring range: 30 °C to 45 °C (86 °F to 113 °F), accuracy: 3 0.5 °C without black body calibration.
- > Recognition distance: 0.3 to 2 m.
- > Fast temperature measurement mode: Detects face and takes skin-surface temperature without identity authentication.
- > Multiple authentication modes are available: card and temperature, face and temperature, card and face and temperature, etc.
- > Face mask wearing alert: If the recognizing face does not wear a mask, the device will prompt a voice reminder. At the same time, the authentication or attendance is valid.
- > Forced mask wearing alert: If the recognizing face does not wear a mask, the device will prompt a voice reminder. At the same time, the authentication or attendance will be failed.
- > Displays temperature measurement results on the authentication page.
- > Triggers voice prompt when detecting fever.
- > Configurable door status (open/close) when detecting fever.
- > Transmits online and offline temperature information to the client software via TCP/IP communication and saves the data on the client software.
- > Face recognition duration < 0.2 s/User; face recognition accuracy rate \geq 99%.
- > 50,000 face capacity, 50,000 card capacity, and 100,000 event capacity.



TEMPERATURE MEASUREMENT WALK-THROUGH DETECTOR

FUNCTIONS

- > Non-contact temperature measurement: face temperature measurement with accurately personnel matching. Temperature accuracy: 30.5 °C, detection distance: 0.3 to 3 m, target height: 1.45 m to 1.85 m
- > Temperature filtering: adjustable temperature threshold. An over-threshold temperature will trigger the audible strobe light.
- > Counting display: displays the walk-through people number, metal alarm times, real time temperature, number of people in abnormal temperature
- > Metal detection: metal like a clip
- > Multi-Area alarm: Indicates the metal position on the body. Max. 18 areas
- > Modularized component: easy transmission and installation



THERMAL IMAGING FEATURES

Smart Functions:

- Temperature exception detection
- Linkage for audible alarm
- Linkage of white strobe light alarm

Thermal Imaging Functions:

- Uncooled sensor, resolution: 160 x 120
- Supports AGC4.0, DDE, and 3DNR
- Supports dual-light fusion image
- Supports visible light and thermal imaging frame over lay
- 15 pseudo colors: white, black, red, etc.

System Functions:

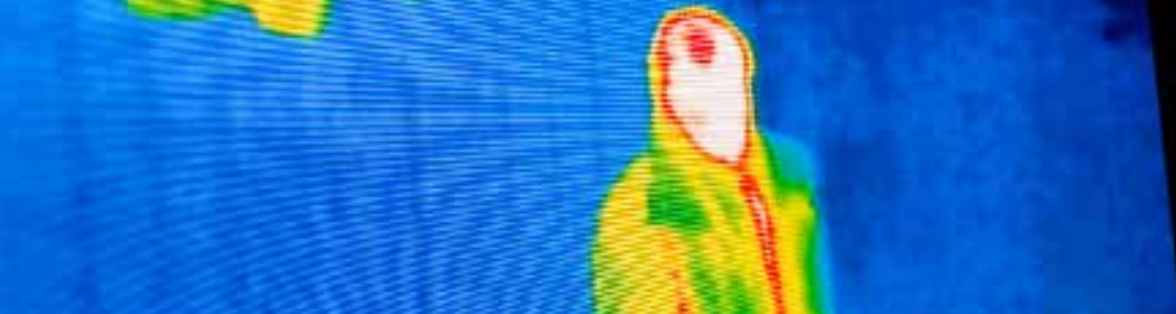
- Dual-channel, single IP
- Dual-streaming
- PoE power supply
- IP66 protective level
- Operation temperature: 5°C to 40°C, <95% RH

Visible Light Functions:

- 4 MP, 1/2.7 " CMOS, Max. resolution: 2688 1520@25fps
- Supports low bit rate, low latency and ROI
- Independent settings for day or night condition
- 1-ch audio input/output
- 1-ch 12 VDC power input

Security:

- Security verification, such as HTTPS, supports license creating
- Three level of users, IP address filtering, user and password authentication



METAL DETECTION FEATURES

- > Detection accuracy: metal in the size like a clip (or 1/2 clip) is detectable on the middle of the detector. Goods like Belt buckle can be excluded. Copper, aluminum, and zinc (over 150 g), controlled knife, and gun are detectable
- > Anti-interference: multiple detector can work abreast at the same time
- > Multi-area alarm: Indicates the metal position on the body. Max. 18 areas
- > Frequency settings: 100 frequencies can be set, and different ring tone for different frequency
- > Sensitivity Settings: 255 level of sensitivity can be set
- > People counting: display the number of walk-through people and people in alarm
- > Positioning LED: LEDs on the sides of the detector for indicating the position of the prohibited goods.
- > LCD screen
- > Storing sensitivity parameters for different scenes for shortcut settings.
- > Material: PVC shell

SPECIFICATIONS

THERMAL IMAGING:

- Sensor: Vanadium oxide uncooled sensor
- Max. Resolution: 160x120
- Pixel Interval: 17Qm
- Response Waveband: 8 to 14Qm
- Lens (Focal Length): 3mm
- Field of View: 50° 37.2°

VISIBLE LIGHT:

- Sensor: 4 MP 1/2.7" Progressive Scan CMOS
- Resolution: 2688 1520@25fps
- Min. illuminance: 0.0018Lux @(F1.6,AGC ON), 0 Lux with IR
- Shutter speed: 1/3s to 1/100,000s
- Focal length: 4mm
- Field angle: 84.0°x44.8°
- Day/Night switch: ICR
- WDR range: 120db

IMAGE FRAME:

- Thermal imaging and visible light: Thermal imaging integrated with visible light frame
- Picture in picture: Supports visible light and thermal imaging frame over lay
- Smart information overlay: Supports (only temperature measurement rule and temperature are supported)

TEMPERATURE MEASUREMENT:

- Temperature exception detection: Expert mode: 10 pints, 10 frame, 21 rules on each line
- Body temperature measurement: AI face detection, multi-target detection
- Measurement range: 30 to 45°C
- Temperature Alarm: Alarm triggered when the temperature is over the threshold
- Measurement accuracy: No black body:30.5°C
With black body: 30.3°C

GENERAL:

- Power supply: 220V
- <25W
- Operation temperature and humidity:
Speed dome: 5°C to 40°C, <95% RH
Walk-through detector: -20°C to 85°C, 99%, RH
- Protective level:
Dome camera: IP66
Walk-through detector: IP53

WEIGHT:

- About 75Kg



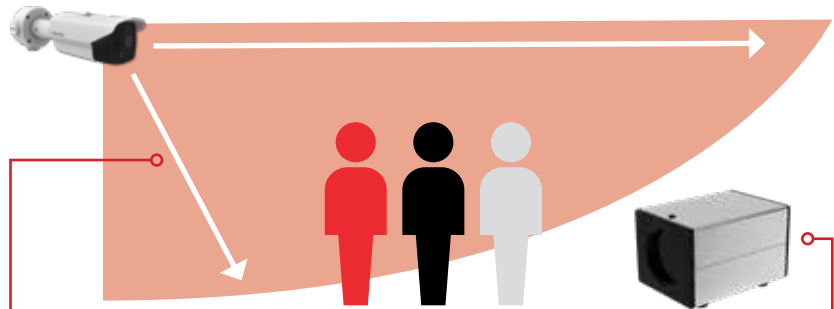
TEMPERATURE SCREENING THERMOGRAPHIC BULLET CAMERA

FEATURES & TECHNICAL SPECS

- > High sensitivity thermal module with 384 x 288 resolution
- > NETD is less than 40 mk (@25°C, F#=1.0)
- > Leading thermal image processing technology: Adaptive AGC, DDE, 3D DNR
- > Reliable temperature detection alarm
- > High quality optical module with 4MP resolution
- > Accuracy: +- 3°C
- > Bi-spectrum image fusion, picture-in-picture preview
- > Temperature Measurement: Support 3 temperature measurement rule types, 21 rules (10 points, 10 areas, and 1 line).
- > Temperature Range: From 30°C to 45°C (86°F ~ 113°F)
- > Temperature Accuracy: +- 0.5 °C

SPECIFICATIONS:

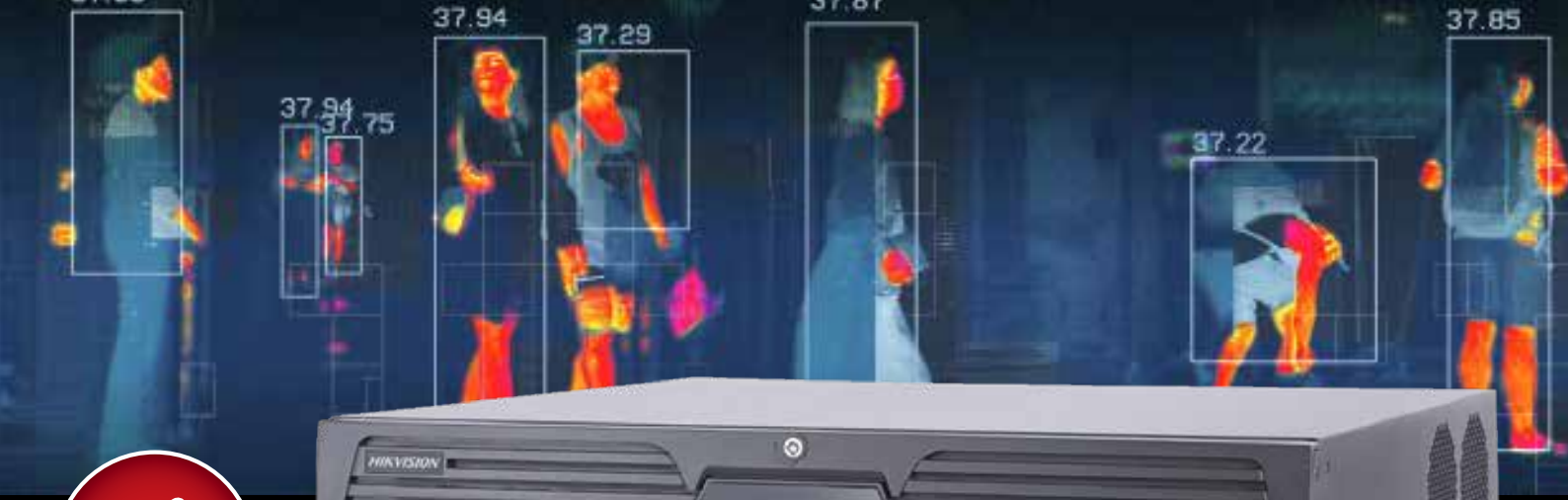
- > WALL MOUNTED
- > INSTALLATION HEIGHT: 1.7-2.6M



- > DISTANCE BETWEEN CAMERA AND PERSONS:
 - 4.5-9M [15MM THERMAL LENS];
 - 2-7M [10MM THERMAL LENS]
- > DISTANCE BETWEEN CAMERA AND BLACKBODY: 5M. KEEP BLACKBODY IN UPPER LEFT/UPPER RIGHT CORNER OF CAMERAS VIEW.



- > Real-time alarm monitoring
- > Secondary measurement with mercury thermometer, ear thermometer, etc.



DEEPINMIND NVR

- > Flexible, scalable, reliable and powerful central surveillance system
- > Supports live view, play back, access control, alarm management, personnel identification, temperature data storage, abnormal temperature trend analysis, etc.
- > The customized HikCentral Professional version supports thermographic products, DeepinMind NVRs and face recognition terminals.

FEATURES & TECHNICAL SPECS

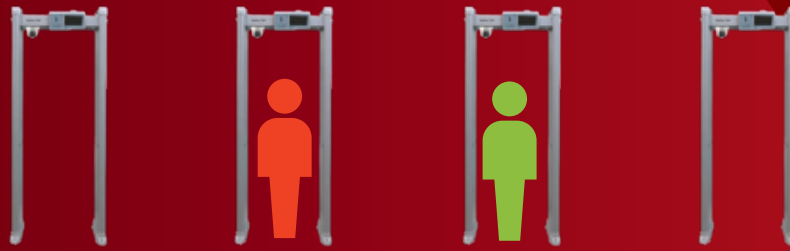
- > Supports both facial recognition and false alarm reduction (cannot be enabled at the same time)
- > Up to 8 channel facial recognition based on deep learning algorithm
- > 32 libraries, up to 100,000 face pictures
- > Up to 16 channel smart analysis (line crossing/intrusion)
- > Up to 16 channel video analysis for human and vehicle recognition to reduce false alarms
- > Supports multiple VCA (Video Content Analytics) events
- > Up to 32 channel IP cameras can be connected
- > Supports decoding H.265+/H.265/H.264+/H.264/MPEG4 video formats
- > Up to 12 MP high-definition live view, storage and playback
- > Up to 320 Mbps high incoming bandwidth ensures IP cameras can be connected
- > 2 HDMI (different source) and 2 VGA interfaces (different source)
- > 8 HDD can be used for continuous video recording
- > Compatible with third-party network cameras
- > Supports some specialist cameras, including people counting camera/ANPR (automatic number plate recognition) camera/fisheye camera
- > Advanced streaming technology enables smooth live view in poor network conditions
- > Supports RAID 0, 1, 5, 6, 10 and N+1 hot spare for even more reliable data storage, effectively avoids data loss risks



THE SPECIAL INTERFACE OF DEEPINMIND NVR VISUALLY DISPLAYING TEMPERATURE AND MASK STATUS

THE ALL IN ONE SOLUTION

WALK THROUGH DETECTOR



WALK THROUGH DETECTOR

BULLET CAMERAS



HANDHELD CAMERA



HANDHELD CAMERA



BLACKBODY

BULLET CAMERAS



FACE RECOGNITION TERMINAL



BULLET CAMERAS



BLACKBODY



BULLET CAMERAS

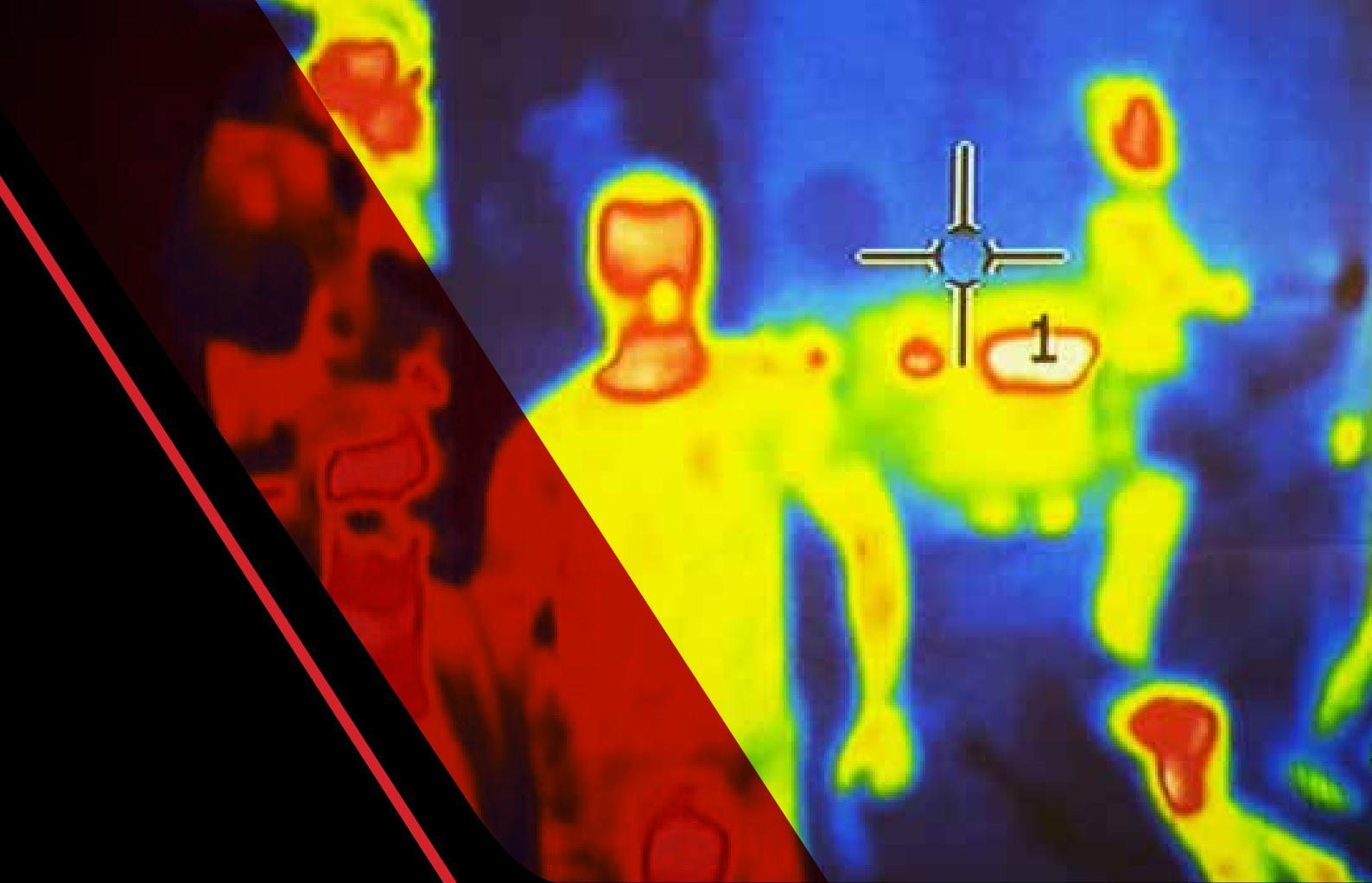


HANDHELD CAMERA

SURVEILLANCE & MONITORING ROOM/STATION



DEEPINMIND NVR



PROUD SYSTEMS INTEGRATOR FOR:

HIKVISION

BARNEL DESIGN & MANUFACTURING

Reg. No: 2010/147713/23 | VAT No: 4340257015

PHYSICAL ADDRESS:

39 Kelly Road - The Palisades Business Park, Unit C1, Jet Park, Boksburg, 1460

POSTAL ADDRESS:

PO Box 17697, Sunward Park, 1470

Office: +27 11 397 1119 | Fax: +27 86 512 9857 | E-mail: info@barneldesign.co.za

Mpumalanga & Natal - Oliver Nelson: +27 83 287 5132 | Limpopo - Niel Pretorius: +27 84 301 9369

North West - Garth Nelson: +27 83 260 2610 | Cape & Freestate - Charl Barnard: +27 83 450 6266

WWW.BARNELDESIGN.CO.ZA